

Tobacco Track and Trace

Systems to Track and Trace
the World's Tobacco Products



TOBACCO TRACK AND TRACE

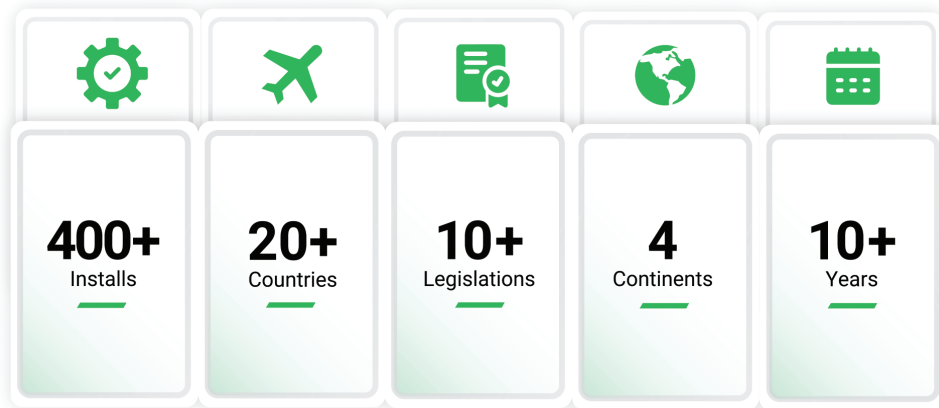
2b Nimrod Way, East Dorset Trade Park, Wimborne, Dorset, BH21 7SH, UK

Track and Trace Solutions

Serialisation & Aggregation | Machinery & Automation
Coding & Labelling devices | Visualisation & Reporting

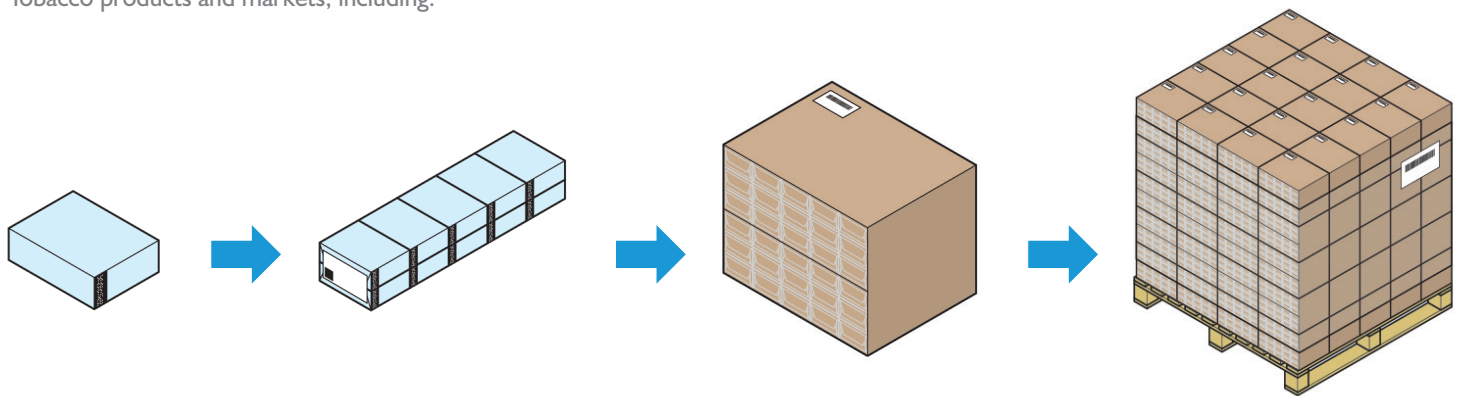
Engineering and Automation to the Tobacco Industry for over 60 years

Marden Edwards in Tobacco Track and Trace



We implement and develop Track and Trace Solutions for Tobacco production lines to provide high operational efficiency and 100% product compliance for all Tobacco products and markets, including:

Cigarette, Cigar, Cigarillo, Snus, Modern Oral, Molasses, MYO and RYO. Supplying Pack to Outer to Master Case through to Pallet Aggregation.



Track and Trace Solutions

Tobacco Know-How | Consultancy | Development & Design

Manufacturing & Assembly | Solutions & Line Integrations

Project Management | Installation & Commissioning | Training & Support

What we do

We provide Track and Trace Solutions for Tobacco production lines to meet the global regulatory requirements of our customers. Our Track and Trace solutions include full serialisation and aggregation to cover the entire production line process from pack to outer, outer to master case and master case to pallet completion.

Who we do it for

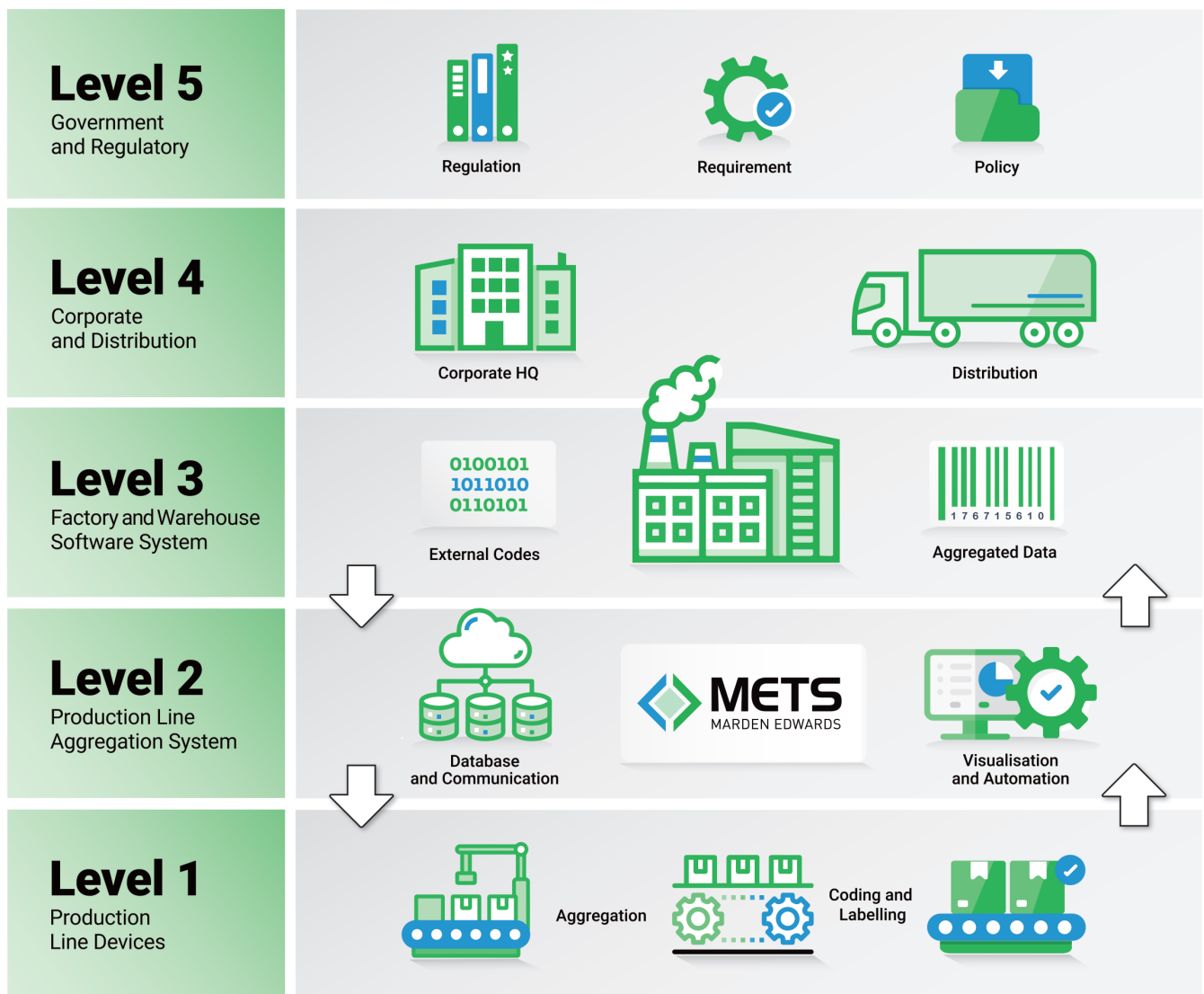
We provide for all Tobacco industry products on a global basis meeting the regulatory needs of our customers domestic and export markets.

Our customers include multi-national corporations and independent organisations. We encompass all Tobacco products including Cigarette, Cigar, Cigarillo, Snus, Modern Oral, Molasses, MYO and RYO.

How we do it

We apply our extensive Tobacco Industry and Production Machinery knowledge to the specific circumstances of each individual Tobacco production line.

This ensures we provide the optimum solution for each production line resulting in high operational efficiency and 100% product compliance.





Marden Edwards

World Class Track and Trace Systems for World Class Tobacco Brands



Established for over 60 years, Marden Edwards Limited is a world leader in the design, manufacture and assembly of packaging machinery and Track and Trace systems to the tobacco industry.



Service & Support

A comprehensive range of Training and Support Services are available to our users. These include technician, super-user and line-operator training to enable full knowledge transfer. A variety of remote and on-site support packages, including long-term service level agreements with up to 24/7 cover and support resources, are available according to the exact site and user needs.



track



trace



secure



METS
MARDEN EDWARDS

TOBACCO TRACK AND TRACE

2b Nimrod Way, East Dorset Trade Park,
Wimborne, Dorset, BH21 7SH, UK

Tel +44 (0) 1202 861234

Fax +44 (0) 1202 861400

mets@mardenedwards.com

www.tracktrace.technology

Connect with us

